



Princes Park Health Centre Newsletter

www.princesparkhealthcentre.co.uk

Volume 1 Issue 6

September 2012

*Partner's Corner – A
regular feature on all your
GP's. This month we look at
Dr Jonathan Andrews*



I was born and brought up in South London and went to school in Wimbledon. Having spent most of my time on the river rowing for the school, I failed my A levels first time round. Went back to school to retake them and was 19 and 3/4 by the time I left! I then worked in Sutton Jobcentre for a year before starting at Medical School at University College London. I did an intercalated BSc degree in the physiology of exercise and eventually qualified as a Doctor in 1990.

I met my wife, Fenella on the day we both started work as Junior Doctors at Eastbourne DGH. I did the Eastbourne GP vocational training scheme including a year as a Registrar at Seaford Health Centre. During that year I swapped with the Trainee at The Winifred Lee Health Centre (now The Apollo Centre) for 2 weeks. The then senior partner Dr Forster advised me to stay around in the area as a post was due to come up. I was appointed Junior Partner and started in the Practice on 3rd July 1995. We now have 4 Children aged 10,14,16 and 17. Fenella is also a GP in Bexhill. We also have 3 chickens called Phyllis, Deidre and Dave, a rabbit called Ronnie and a

horse called Hamish. I keep myself fit with riding and running regularly. Over the years I have raised many thousands of pounds for children's charities in sponsored Marathons, half marathons and The Great South Run.

At the Practice I am full time and about to take over from Doctor Stockton as senior partner. I am the lead tutor for medical students from Brighton and Sussex Medical School and was very proud to be voted Community teacher of the year in the last academic year. I am also the trainer and supervisor to the GP registrars that come to the Practice for the final year of their postgraduate training. My main medical interest is Diabetes and I run the clinics jointly with the Nursing team looking after over 750 Diabetic Patients.

My hope is to lead the Practice through the challenges of the NHS reforms in the next year and to work with the team to provide an excellent service for our patients.

**Welcome to Dr Nisanthan
Sivagnanasundaram**



Dr Nisanthan Sivagnanasundaram will be our new GP Registrar from August and you will be pleased to find out that he will be known as Dr Siva.

He is from Bromley in Kent and enjoys playing football and rugby. Dr Siva supports Liverpool FC and he blames this fact on his Dad who has supported them for years and thus corrupted him from a young age. He studied at Newcastle University and spent his first two years as a Doctor there. He has been working at the Eastbourne DGH for the past two years and will now spend a year with us at Princes Park.

Dr Siva enjoys travelling and watching films, although he has a dislike for mushrooms and fresh tomatoes, he also likes to watch cooking programmes. His big love though is ice cream.

Did you know?

40% of appointments are now pre-bookable up to two weeks in advance.

Did you know?

That most GP's offer evening appointments that are also pre-bookable on a Tuesday and Thursday between 6.30 – 19.40pm.

“Boots”, the chemist next door, also stays open until 7.30pm on these evenings.

Dr Jane Wiggins in Kenya



Dr Jane Wiggins has recently returned from a trip to the Masai Mara National Park in Kenya, where she acted as expedition doctor to a party of 14-18yr olds from Battle Abbey School, Sussex. Together with the adults the party was 21 in total. She helped them build a wooden building for two classrooms for a community primary school in the area. Previously 120 Kenyan 3-8year olds were using a small corrugated iron two classroom building on the same site. Now the new building (see photo) has been built it will receive continuing sponsorship from a local safari lodge together with the local Kenyan council which plans to fund the building of more classrooms there. The area's doctor (equivalent to a GP) will be using the new building to hold his child immunisation clinics and monthly drop in clinics for the community nearby. During the trip the group was given special permission to camp in the national park and there was also plenty of time for safari's to see the wonderful local animals. She says it was an amazing, unforgettable rewarding experience even though it was very tiring! In July 2010 she helped with a similar project in a different area of Kenya.



Did you Know?

Last month 119 people forgot to turn up for their appointment!!! This is up on the previous month and still way too HIGH. Please, if you cannot attend your clinic apt then make a cancellation. This then allows others waiting to utilise the freed up place.

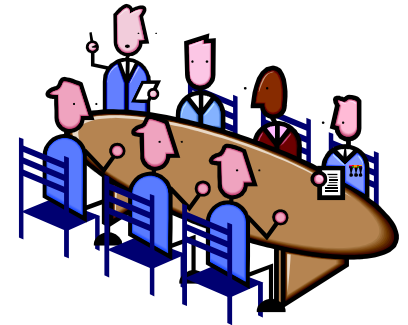
Did you Know?

Appointments for Practice Nurses, please remember you can book in advance. There are often no spaces available on the day.

Surgery Closure

Please note that the surgery will be closed from 12.30pm on Thursday 20th September for staff training.

Voice from the Patient Participation Group



The purpose of this group is to gain views from the patients on how well the current surgery services are run and then feedback these comments constructively to the practice.

The minutes from the meeting held on 6th September 2012 are on the website. You can also find minutes from all the previous meetings here.

Ian Tulley has been voted in as the first Chairperson and would like to hear views and suggestions from other patients on how best the PPG can operate. You can contact Ian by writing to him direct, 'Care Of' the surgery.

Date of next meeting: Thursday 4th October 2012 at 12.30pm.

"Why not visit the dedicated noticeboard for the PPG in the reception area."

A team photo of the 'Patient Participation Group' members can now be found on the noticeboard.

*To A&E or not to A&E
that is the Question?*

Getting the correct treatment in the correct place is important to us. Did you know that each time a patient attends A&E the Practice gets charged? Did you know it can cost between £56 and £245 to attend A&E, even if you do not actually wait for treatment?

The Practice can usually provide the care that you need but we need you to contact us first and not go to A&E when we are open.

Remember an unnecessary visit to A&E means that less money is available to the Practice to provide local services for our patients.

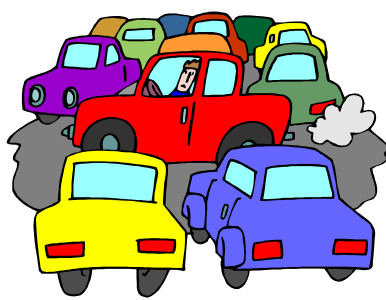
Flu Vaccination Clinic
Dates

Saturday October 13th and 20th from 8.30am - 12.00noon are our walk in Flu Vaccination clinics. No appointment required.

Did you know?

That medicines in unused blister packs can be sent to Africa - they must have at least a 15 month expiry date to be valid. Please bring along to the surgery any unused medicines that you might have.

Car Parking at Princes Park
Health Centre



If there are no car parking spaces left please do not block the car park area by sitting in your car double parked. This causes problems for the delivery lorries/vans that then have problems with access. Please park on the road instead, many thanks.

A note to our Readers

If anybody would like to contribute an article and be included in the next newsletter, then please leave your comments at reception or email;
grahamhunt@nhs.net

Repeat Prescriptions

Please be patient when it comes to requesting repeat prescriptions and allow plenty of time!!
We can deal with up to 2,000 repeats in a week and often double that before a holiday break

Princes Park Website

Finally you can find a copy of this newsletter on our website plus lots of other useful information.

www.princesparkhealthcentre.co.uk

